

Next meeting:
Dec 7th 2021

The SUPER model:

For more information:
b.a.evans@swansea.ac.uk



Processes and activities in the first five years

On behalf of all SUPER public contributor members with Bridie Evans, PRIME Centre Wales

Best practice encourages public involvement in research to improve rigour, relevance, accountability and increase likelihood of impact. PRIME Centre Wales undertakes patient-relevant research in collaboration with partners and stakeholders. SUPER (Service Users for Primary and Emergency care Research) is a public-patient group supporting PRIME research, strategy and dissemination.

Held 19 in-person and online meetings 2017-2021

Agreed Terms of Reference; elects a Chair annually

Valued by researchers
'comments used to revise and improve the application'

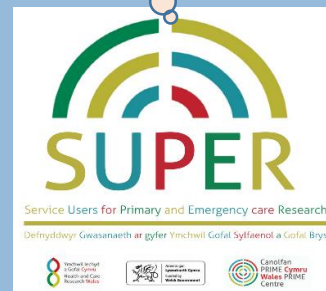
'SUPER raised points I hadn't considered'

'success due to SUPER input'

SUPER is a key forum for PRIME to ensure public involvement. Interaction between researchers and public contributors supports skills, communication and collaborative research.

SUPER is supported by PRIME's lead for public involvement and engagement.

Delivered elevator pitches, presentations and workshops at PRIME Annual Meetings



Published journal article
<https://doi.org/10.23889/ijpds.v5i3.1363>

Provided patient and public comments on more than 60 PRIME research projects

20 members use diverse experiences to advise on research development, dissemination and PRIME strategy