



Adrian Edwards
 Director, PRIME Centre Wales
 & Director of the Wales COVID Evidence Centre
 Professor of Primary Care, Cardiff University



Helen Snooks
 Associate Director, PRIME Centre Wales
 Professor of Health Services Research,
 Swansea University



Carolyn Wallace
 Associate Director & WP4 Care closer
 to communities, PRIME Centre Wales
 Director, Wales School for Social Prescribing Research
 Professor of Community Health, University of South Wales



Clare Wilkinson
 Associate Director, PRIME Centre Wales
 Professor of General Practice, Bangor University



Harry Ahmed
 WP1: Infections & Antimicrobial Resistance
 Senior Clinical Lecturer in Epidemiology
 Director, GP Academic Fellow Scheme, Cardiff University



Kathryn Hughes
 WP1: Infections & Antimicrobial Resistance
 Senior Clinical Lecturer in Primary Care,
 Cardiff University



Alison Porter
 WP2: Emergency, Unscheduled & Pre-hospital Care
 Associate Professor, Swansea University



Andrew Carson-Stevens
 WP3: Patient Safety
 Clinical Professor of Patient Safety &
 Quality Improvement, Cardiff University



Natalie Joseph-Williams
 WP5: Patient-Centred Care
 Senior Lecturer in Improving Patient Care,
 Cardiff University



Fiona Wood
 WP5: Patient-Centred Care
 Personal Chair (Medical Sociologist),
 Cardiff University



Annmarie Nelson
 WP6: Supportive & Palliative care
 Marie Curie Professor of Supportive &
 Palliative Care, Cardiff University



Marlise Poolman
 WP6: Supportive & Palliative care
 Senior Clinical Lecturer in Palliative Medicine,
 Bangor University



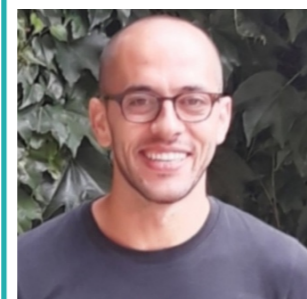
Kate Brain
 WP7: Screening, Prevention & Early Diagnosis
 Professor of Health Psychology,
 Cardiff University



Ivor Chestnutt
 WP8: Oral Health & Primary Dental Care
 Professor & Hon. Consultant in
 Dental Public Health, Cardiff University



Rabeea'h Aslam
 Study Manager,
 Swansea University



Fadi Baghdadi
 Research Associate
 Swansea University



Alison Cooper
 Clinical Research Fellow,
 Cardiff University



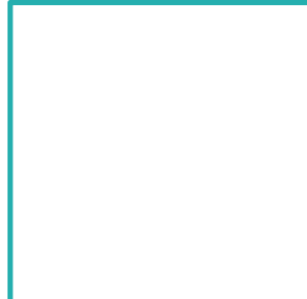
Freya Davies
 Clinical Research Fellow,
 Cardiff University



Anwen Cope
 Senior Clinical Lecturer & Honorary
 Consultant in Dental Public Health,
 Cardiff University



Mark Davies
 Senior Lecturer -
 Adult Advanced Practice,
 University of South Wales



Bridie Evans
 Research Officer
 Swansea University



Julia Hiscock
 Research Fellow,
 Bangor University



Ashra Khanom
 Research Fellow,
 Swansea University



Mark Kingston
 Senior Research Fellow,
 Swansea University



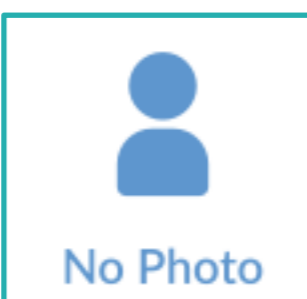
Kate Lifford
 Research Associate,
 Cardiff University



Ruth Lewis
 Senior Lecturer,
 Bangor University



Mark Lewellyn
 Professor of Health & Care Policy,
 Director of WIHSC,
 University of South Wales



Rachel Lowe
 Senior Trial Manager
 Cardiff University



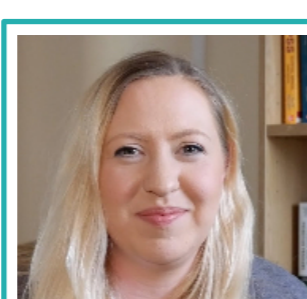
Delyth Price
 Research Assistant
 Cardiff University



Simon Newstead
 Research Assistant,
 University of South Wales



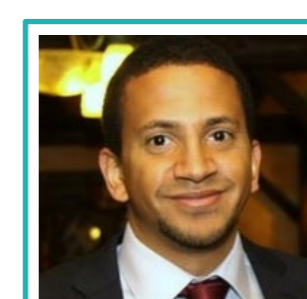
Ruth Northway
 Professor of Learning
 Disability Nursing,
 University of South Wales



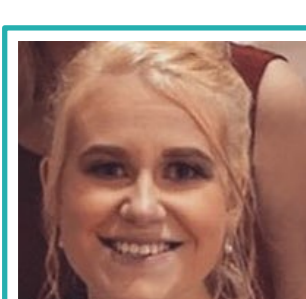
Harriet Quinn-Scoggins
 Research Associate,
 Cardiff University



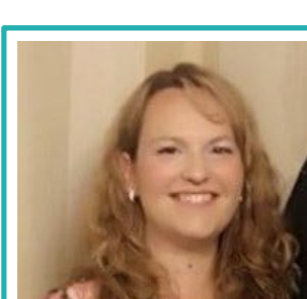
Stacey Rees
 Research Associate
 University of South Wales



Leigh Sanyaolu
 Clinical Research Fellow,
 Cardiff University



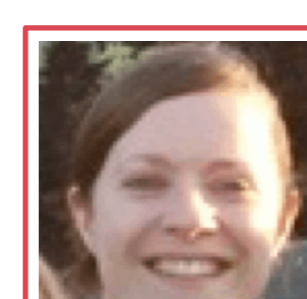
Anna Torrens-Burton
 Research Associate,
 Cardiff University



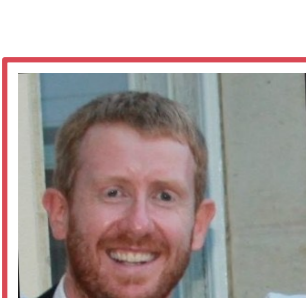
Denitza Williams
 Research Associate
 Cardiff University



Richard Evans
 Administrator
 Bangor University



Jane Greenwell
 Deputy Manager
 Cardiff University



Neil Jenkinson
 Research Administrator
 Swansea University



Marina MacDonald
 Research & Support Officer
 WIHSC, University of South Wales



Anne Surman
 Finance & Communications
 Swansea University



Angela Watkins
 Communications & Operations Manager
 Cardiff University

Directors
Work Package Leads
Research Team
Professional Services & Support